

# DESIGNER SERIES

These hand painted originals, modeled from real wood samples, add a touch of elegance to your home. The quality and design of the Real Fyre® Designer Series capture the realism, texture and subtle nuance of nature's handiwork.

Experience the Designer Series from Real Fyre® and experience what's worth remembering.

Sizes 18"-36"



Split Oak Designer Plus (SDP)

Sizes 18"-30"



Red Oak (RED)

Sizes 16"-42"



Rustic Oak Designer (HRD)

Sizes 18"-30"



Woodstack (WS)

Sizes 18"-42"



Royal English Oak Designer (RD)

Sizes 18"-30"



Forest Oak (FO)



# COMPLETE BURNER SYSTEM

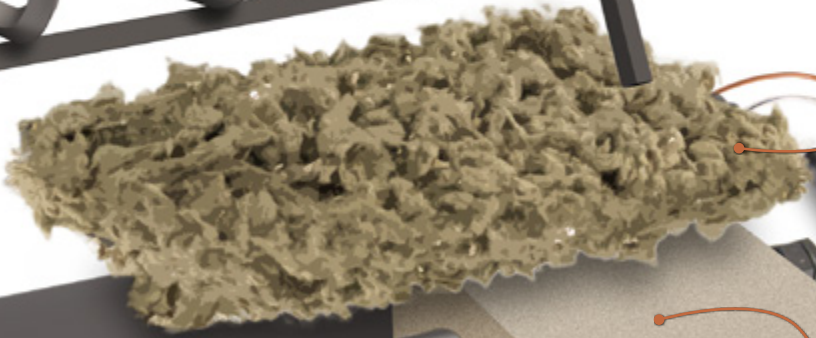
All of our Gas Logs are Steel Reinforced  
for longer life.



(CHAO-Charred American Oak shown)

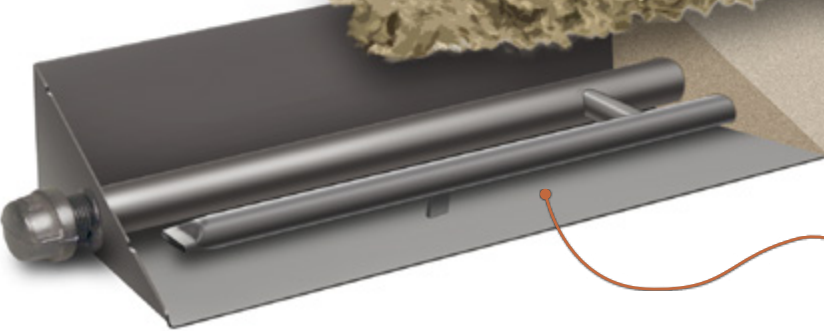
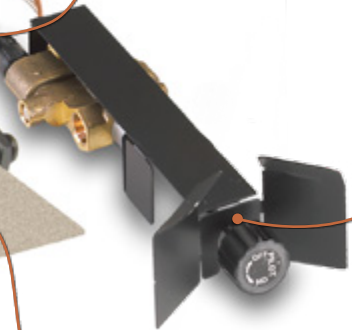


Steel Grate



Glowing Embers

Optional Control Valve  
(SPK-26 shown)



Burner Pan  
(G45-24 shown)

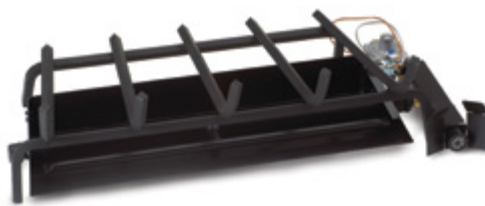
White Sand (NG)  
or  
Vermiculite (LP)

# BURNER SYSTEMS



## GLOWING EMBER BURNER SYSTEMS (G4 & GX4)\*

With dancing flames and a glowing ember bed, the G4 & GX4 are compatible with most Real Fyre® Log Styles and controls. The GX4 features a heavy-duty grate. RGA-72 Certified for Natural and Propane gas. Burners for see-thru, peninsula and island fireplaces are also available.



## TRIPLE T BURNER SYSTEMS (G45 & GX45)\*

These specialized RGA-72 & ANSI standard certified (with controls pre-assembled at the factory) burner systems accentuate the front flame and the ember bed of the log set. Compatible with most Real Fyre® log styles and control options, these burner systems are available in Natural or Propane gas and can be ordered as a see-thru, peninsula and island fireplace, or stainless steel model\*\*.

GX45 Burner Kit includes a heavy-duty grate  
\*\*Stainless steel model only available for the G45 burner



## ADVANCED GLOWING EMBER BURNER SYSTEMS (G46)\*

This patented system features hidden installed controls, piezo ignition and lively flames and embers with less BTU's (fuel consumption). ANSI Standard Certified for Natural or Propane gas. Compatible with most Real Fyre® Log styles.



## PAN BURNER SYSTEMS (P & PB)\*

With Unique burner design for Real Fyre® Gas Logs (P Series) or Contemporary Alternatives Options (PB Series), these burner systems allow flames to erupt over the entire pan. Ideal also for see-thru, peninsula or island fireplaces. Available for Natural or Propane gas.



## GLASS AND GEMS BURNER (G45-GL)

The G45-GL burner creates an enchanting flame picture when used with Fyre Gems and Fyre Glass. Use sand or vermiculite as the base and save on the amount of glass or gems required. Elevated platform provides the maximum effect of the reflective nature of these products and spread the flame for ultimate beauty and warmth.



## STAINLESS STEEL TRIPLE T BURNER SYSTEMS (G45-GL-\*\*-SS)

This specialized burner system accentuates the front flame and embers of the log set and is compatible with most Real Fyre® log styles and controls. ANSI standard certified systems, with controls pre-assembled at the factory, are available. For Natural or Propane gas. Optional stainless steel grate is available.



## SEE-THRU BURNER (G4-2-24)\*

The G45-2-24 burner creates an enchanting look for a fireplace that can be viewed from two sides.



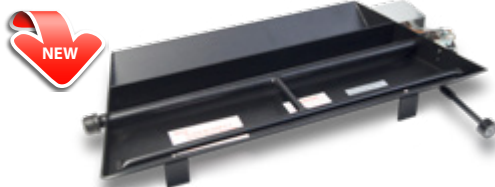
## GLASS AND GEMS BURNER (G45-2-GL)

This Glass and Gems burner system is specially engineered to provide flames that offer maximum impact when used with Real Fyre® Fyre Gems or Fyre Glass. Available for Natural or LP gas. See-thru models are also available.



## RADIANT FYRE GAS LOG SYSTEM (G52)

This burner system Features an Exclusive stainless steel "booster grid" that acts as a catalyst to increase the intensity of the fire. It offers multiple control options including remote, manual and match lit. Compatible with Charred Evergreen Oak & Charred Evergreen Split Oak logs only. Available for Natural or LP gas. (See page 7)



## TAPERED DUAL PAN BURNER (P45)\*

This burner system is designed for use with the new Fyre Spheres or Glass Media. Three sizes (18", 24" & 30") in tapered design to fit most fireplaces.



## EC-60-10 EPIC BURNER

The Epic Burner is designed for use with the Mammoth Pine and is ideal for commercial applications such as restaurants and hotel lobbies. Available in 24"-60" sizes, its clean burn requires no granules or embers.

\*Burners shown with optional control system.

# SAFETY VALVES & CONTROL OPTIONS



**SPK-26**

Low profile system. Manual valve control. Heat shield included. Nat or LP gas.



**APK-17**

APK-17 low profile valve system maximizes flame presentation and allows adjustment of flame height with remote control. New features include: triple heat shield & new angled nipple coupling that elevates the valve for easier installation and operation. VR-1A remote control transmitter included.



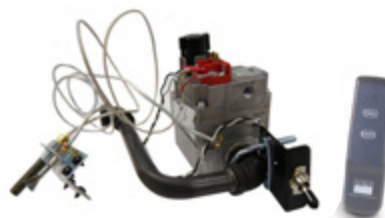
**APK-11**

Automatic remote lighting safety pilot system. Operated by on/off switch and/or remote control. Heat shield included, and RR-1A remote control transmitter included.



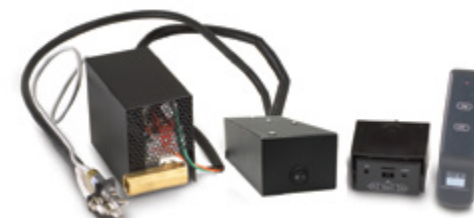
**APK-15**

Allows adjustment of flame height and heat output with a remote control. Decorative wood chunk, heat shield included, and VR-1A remote control transmitter included.



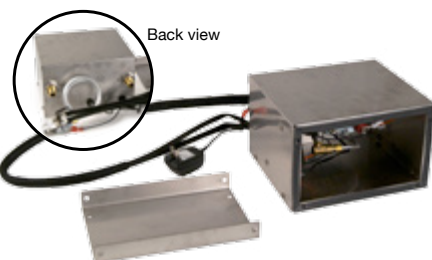
**APK-10**

High volume (up to 240,000 BTU's) on/off remote control with standing pilot. RR-1A included.



**EPK-1**

Automatic remote pilot lighting system. Features flame sensing pilot activation and no standing pilot. Remote control or manual option. RR-1A remote control transmitter included.



**EPK-1M-AD**

110 Volt Electronic, non-standing pilot system designed to be installed outside the firebox. Includes Adaptor Plug & Mounting Bracket.



**EPK-2**

This New Electronic Pilot Kit with Transmitter & Receiver features a flame sensing pilot activation and low profile valve, no standing pilot and manual or remote operation. Includes RR-1A remote control.



**EPK-05**

AC Powered Electronic Pilot System with Hot Surface Ignition and Smart Valve. Includes RR-1A remote control.



**EPK-2V-TR**

110 V Powered Electronic, IPI system with variable flame height control. Enclosed to protect components if used outdoors. Includes: Variable Transmitter, Receiver, and Transformer.



**EPK-3V-TR**

High Capacity, 110 Volt Powered Electronic, non-standing pilot system with variable flame height control. Includes: Variable Transmitter, Receiver, and High Capacity Transformer.



## ON/OFF REMOTE CONTROL OPTIONS



**RR-1A**

Standard on/off remote control.

**RR-2A**

Deluxe on/off remote control. Temperature display and thermal control function.

## VARIABLE FLAME REMOTE CONTROL OPTIONS



**VR-1A**

Standard variable flame height remote control.

**VR-2A**

Deluxe variable flame height remote control. Thermal control temperature display.

## REMOTE / VALVE COMPATABILITY

REMOTE SYSTEM	EPK-1	EPK-2	APK-10	APK-11	APK-15	APK-17
RR-1A	•	•	•	•		
VR-1A					•	•
RR-2A	•	•	•	•		
VR-2A					•	•
WS-1	•	•	•	•		
WS-2	•	•	•	•		
WS-3					•	



**WS-1**

Wall switch for log set on/off controls.



**WS-2**

Wall switch with log set on/off controls with timer.



**WS-3**

Wall switch for log set on/off control (APK-15 ONLY)

## BURNER SIZES CHART

BURNER SYSTEM	12"	16"	18"	19"	20"	24"	30"	36"	42"	48"	60"
G4	•	•	•	•	•	•	•	•	•	•	•
G4 SEE-THRU (see page 15)	•	•	•	•	•	•	•	•	•	•	•
G45	•	•	•	•	•	•	•	•	•	•	•
G45 STAINLESS STEEL	•	•	•	•	•	•	•	•	•	•	•
G45 SEE-THRU (see page 15)	•	•	•	•	•	•	•	•	•	•	•
G45 WITH ASSEMBLED VALVE**	•	•	•	•	•	•	•	•	•	•	•
G45 SEE-THRU WITH ASSEMBLED VALVE**	•	•	•	•	•	•	•	•	•	•	•
G46**	•	•	•	•	•	•	•	•	•	•	•
EC** (see page 15)	•	•	•	•	•	•	•	•	•	•	•
EC SEE-THRU**	•	•	•	•	•	•	•	•	•	•	•
P/PB	•	•	•	•	•	•	•	•	•	•	•
G52**	•	•	•	•	•	•	•	•	•	•	•
P45	•	•	•	•	•	•	•	•	•	•	•

## BURNER / VALVE COMPATIBILITY CHART

CONTROL MODEL	BURNER SIZE		
	G4 & G45 STANDARD	G45-2 SEE-THRU	G4-2 SEE-THRU
SPK-20 / SPK-26	12"-60"	16"-36"	12"-36"
SPK-20P / SPK-26P	12"-60"	16"-60"	12"-60"
APK-10 / APK-10P	12"-60"	16"-60"	12"-60"
APK-11	12"-30"	16"-18"	12"-18"
APK-11P	12"-60"	16"-36"	12"-36"
APK-15	12"-36"	16"-18"	12"-18"
APK-15P	12"-60"	16"-36"	12"-36"
APK-17	12"-30"	16"-24"	12"-18"
APK-17P	12"-60"	16"-60"	12"-60"
EPK-1	12"-30"	16"-18"	12"-18"
EPK-1P	12"-60"	16"-36"	12"-36"
EPK-1M-AD	12"-30"	16"-18"	12"-18"
EPK-1M-AD/LP	12"-60"	16"-36"	12"-36"
EPK-2	12"-30"	16"-18"	12"-18"
EPK-2P	12"-60"	16"-36"	12"-36"
EPK-2V-TR	12"-36"	16"-30"	12"-30"
EPK-2VP-TR	12"-42"	16"-36"	12"-36"
EPK-3V-TR	12"-60"	16"-60"	12"-60"
EPK-3VP-TR	12"-60"	16"-60"	12"-60"
EPK-05	12"-36"	16"-30"	12"-30"
EPK-05P	12"-42"	16"-36"	12"-36"

Add a "P" for propane

\*\* Listed burners for certain geographical areas include assembled valve. See your dealer if these burners are required for your area.

CRAFTED WITH PRIDE  IN THE USA

 **realfyre™**  
PREMIUM GAS LOGS

14724 PROCTOR AVE. CITY OF INDUSTRY, CA 91746  
WWW.REALFYRE.COM

### REAL-FYRE® VENTED GAS LOG SETS LIMITED WARRANTY HIGHLIGHTS

ALL PETERSON VENTED CERAMIC REFRACTORY GAS LOGS ARE WARRANTED FOR AS LONG AS YOU OWN THEM (LIFETIME).  
ALL PETERSON VENTED BURNERS ARE WARRANTED FOR TEN (10) YEARS. SPK-26 CONTROLS ARE COVERED BY A THREE (3) YEARS "ALL PARTS" WARRANTY. THE APK-17 VALVE IS COVERED FOR TWO (2) YEARS. ALL OTHER PETERSON VALVES, PILOTS AND CONTROLS ARE COVERED BY A ONE (1) YEAR LIMITED WARRANTY (EXCLUDING BATTERIES).

Real Fyre® Charred Majestic Oak (CHMJ) Gas Logs shown in Estate Series Fireplace by Lennox on front cover  
Real Fyre® Woodstack (WS) Gas Logs (w/woodchip ring, pine cone, & acorns) shown in Estate Series Fireplace by Lennox on back cover

**The Robert H. Peterson Co. reserves the right to amend product specifications without prior notice.**

Real Fyre® Gas Logs are accepted by national and local building codes and authorities, and are available with one or more of the following listings or certifications:  
CSA, RADCO, OMNI, ICC

Proud members of Hearth, Patio and Barbecue Association (HPBA), National Propane Gas Association (NPGA), and National Fireplace Institute (NFI) Advocate.



L-A1-01815

